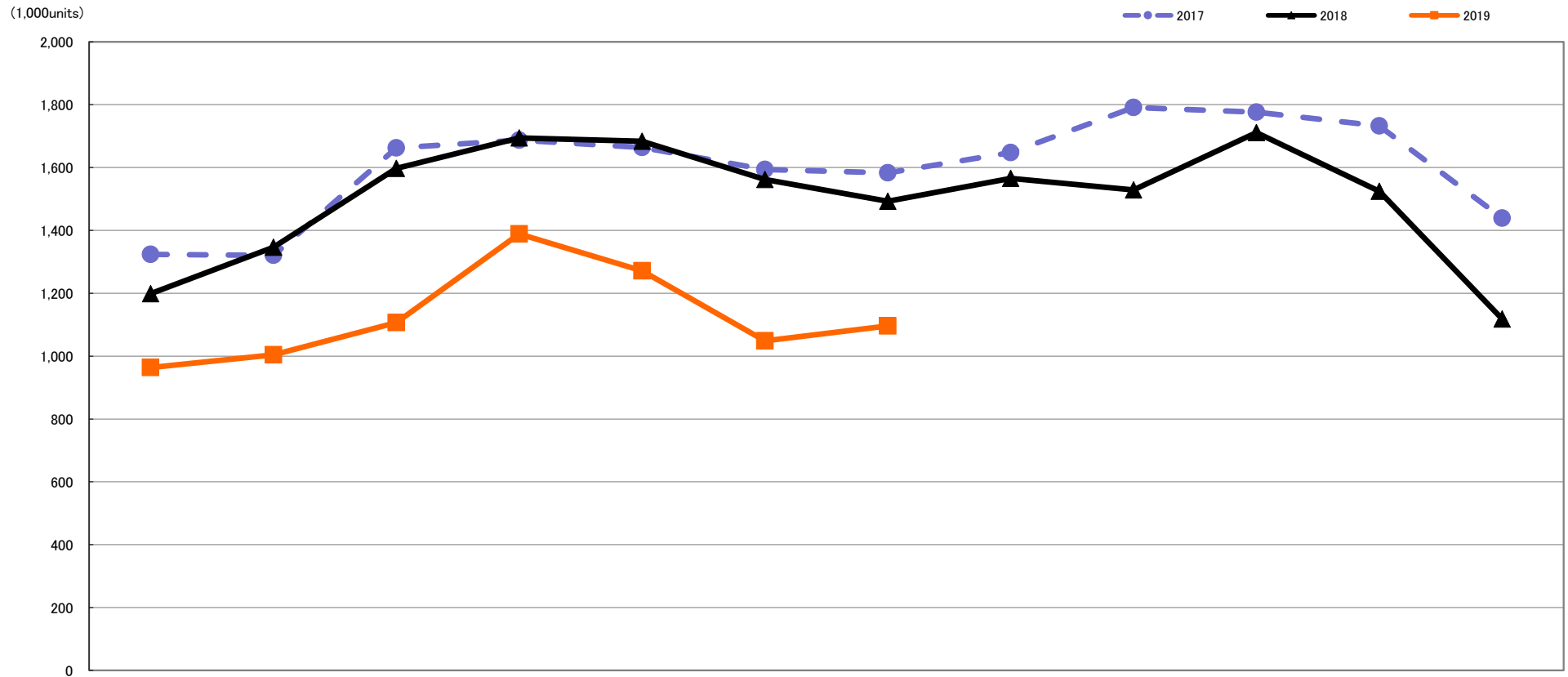


# Quantity of Total Shipment of Interchangeable Lens [Worldwide]

## Comparison of 2017, 2018 and 2019 :Jan.-Jul.



	Jan.	Feb.	Mar.	Apr.	May.	Jun.	Jul.	Aug.	Sep.	Oct.	Nov.	Dec.
2019	963,605	1,004,101	1,106,398	1,388,778	1,271,151	1,048,670	1,096,143					
	80.4%	74.6%	69.2%	82.0%	75.5%	67.1%	73.4%					
2018	1,198,328	1,346,487	1,597,691	1,694,378	1,683,348	1,562,317	1,492,705	1,565,477	1,528,924	1,711,293	1,524,578	1,118,183
	90.5%	102.0%	96.1%	100.4%	101.2%	98.0%	94.3%	95.0%	85.4%	96.3%	88.0%	77.7%
2017	1,323,518	1,320,515	1,662,137	1,687,036	1,663,979	1,594,012	1,583,364	1,647,579	1,791,121	1,776,139	1,732,334	1,438,865